



## **TD Harvey**

### **SITUATION REPORT #2**

**DATE OF REPORT: Tuesday, August 22, 2017, 17:00 Hours.**

#### **1. CURRENT SITUATION:**

##### **Local Situation:**

The National Weather Service and the State Operations Center has conducted conference calls to coordinate the response of Tropical Depression Harvey. Currently the CEOC continues to monitor the storm and coordinate with our point to point the City of Port Arthur. At this time they had decided to shelter in their jurisdiction based on the path of the storm.

Expect rain and winds to arrive here sometime Friday. 6-8 inches of rain expected over a 3 day period if it remains on track and continues to move. There is a chance for this storm to stall and produce more rain.

##### **Statewide Situation:**

A broad area of low pressure associated with the remnants of Harvey is located over the eastern Bay of Campeche. Although thunderstorm activity has increased over the northern portion of the system tonight, recent satellite wind data indicate that low pressure area lacks a well-defined circulation at this time. Environmental conditions are conducive for development, and a tropical depression or tropical storm is very likely to form today or tonight while the low moves northwestward at about 10 mph across the western Gulf of Mexico, possibly reaching the northwestern Gulf coast late Friday.

An Air Force Reserve reconnaissance aircraft is scheduled to investigate the low this morning. Regardless of development, this system is likely to slow down once it reaches the coast, increasing the threat of a prolonged period of heavy rainfall and flooding across portions of Texas into early next week. This system could also produce storm surge and tropical storm or hurricane force winds along portions of the Texas coast later this week, and Tropical Storm or Hurricane Watches could be required later today for portions of the coast of Texas.

\* Formation chance through 48 hours...high...90 percent.

\* Formation chance through 5 days...high...near 100 percent.

## From the National Hurricane Center

At 100 PM CDT (1800 UTC), the center of Tropical Depression Harvey was located near latitude 21.5 North, longitude 92.5 West. The depression has been nearly stationary for the past few hours, but is expected to resume a motion toward the northwest near 9 mph (15 km/h) later today. A track toward the northwest or north-northwest is expected for the next 48 hours. On the forecast track, Harvey should be approaching the Texas coast late Friday.

Maximum sustained winds are near 35 mph (55 km/h) with higher gusts. Some strengthening is forecast during the next 48 hours, and Harvey could become a hurricane on Friday.

The estimated minimum central pressure is 1005 mb (29.68 inches).

### HAZARDS AFFECTING LAND

-----  
RAINFALL: Harvey is expected to produce total rain accumulations of 10 to 15 inches with isolated maximum amounts of 20 inches over the middle and upper Texas coast and southwest Louisiana through next Tuesday, with heavy rainfall beginning as early as Friday morning. Harvey is also expected to produce total rain accumulations of 3 to 9 inches in portions of south, central, and northeast Texas and the rest of the lower Mississippi Valley. Rainfall from Harvey could cause life-threatening flooding.

STORM SURGE: The combination of a dangerous storm surge and the tide will cause normally dry areas near the coast to be flooded by rising waters moving inland from the shoreline. The water is expected to reach the following heights above ground if the peak surge occurs at the time of high tide...

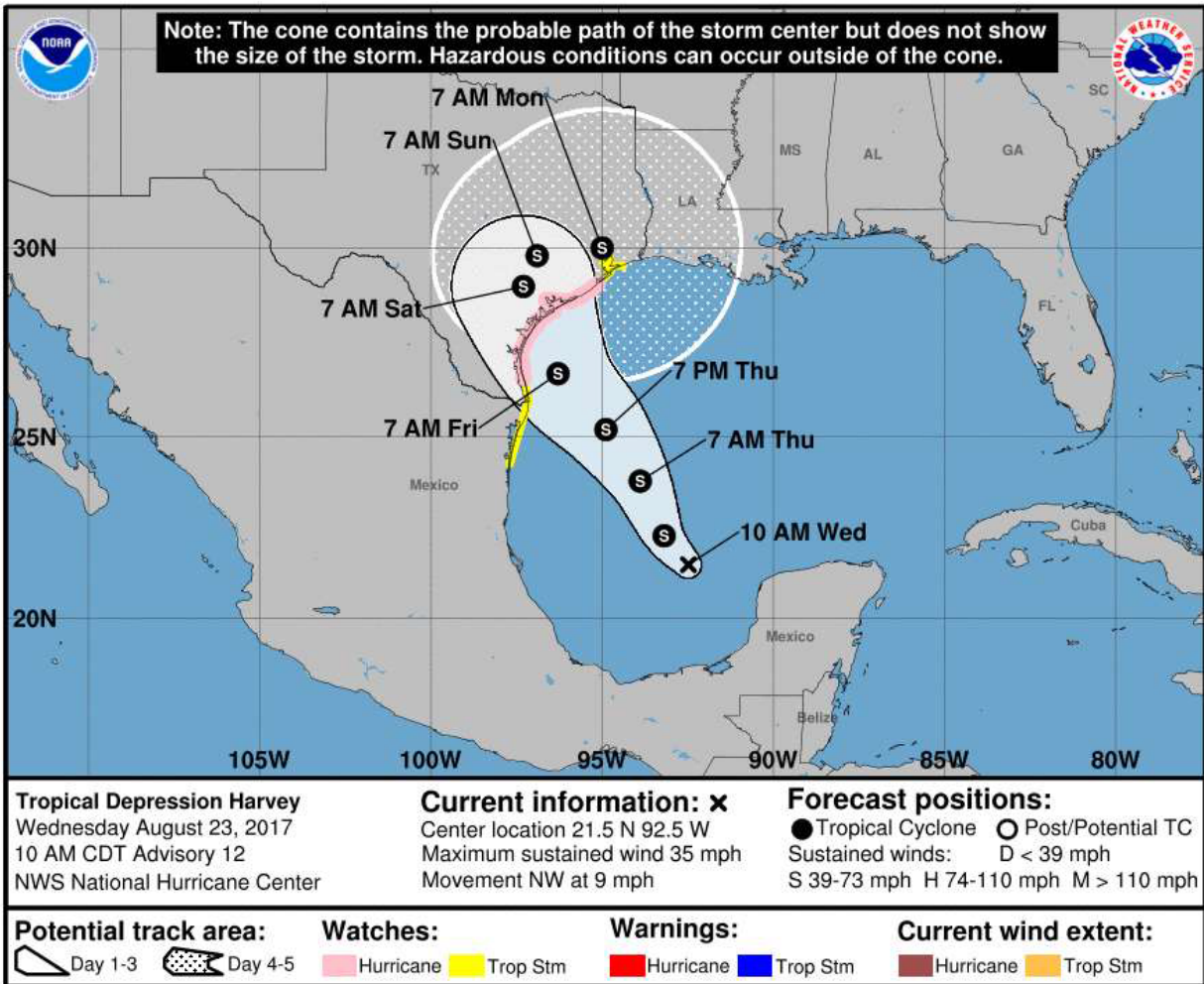
Port Mansfield to High Island...4 to 6 ft

The deepest water will occur along the immediate coast near and to the northeast of the landfall location, where the surge will be accompanied by large and destructive waves. Surge-related flooding depends on the relative timing of the surge and the tidal cycle, and can vary greatly over short distances. For information specific to your area, please see products issued by your local National Weather Service forecast office.

WIND: Hurricane conditions are possible within the hurricane watch area by late Friday, with tropical storm conditions possible by early Friday.

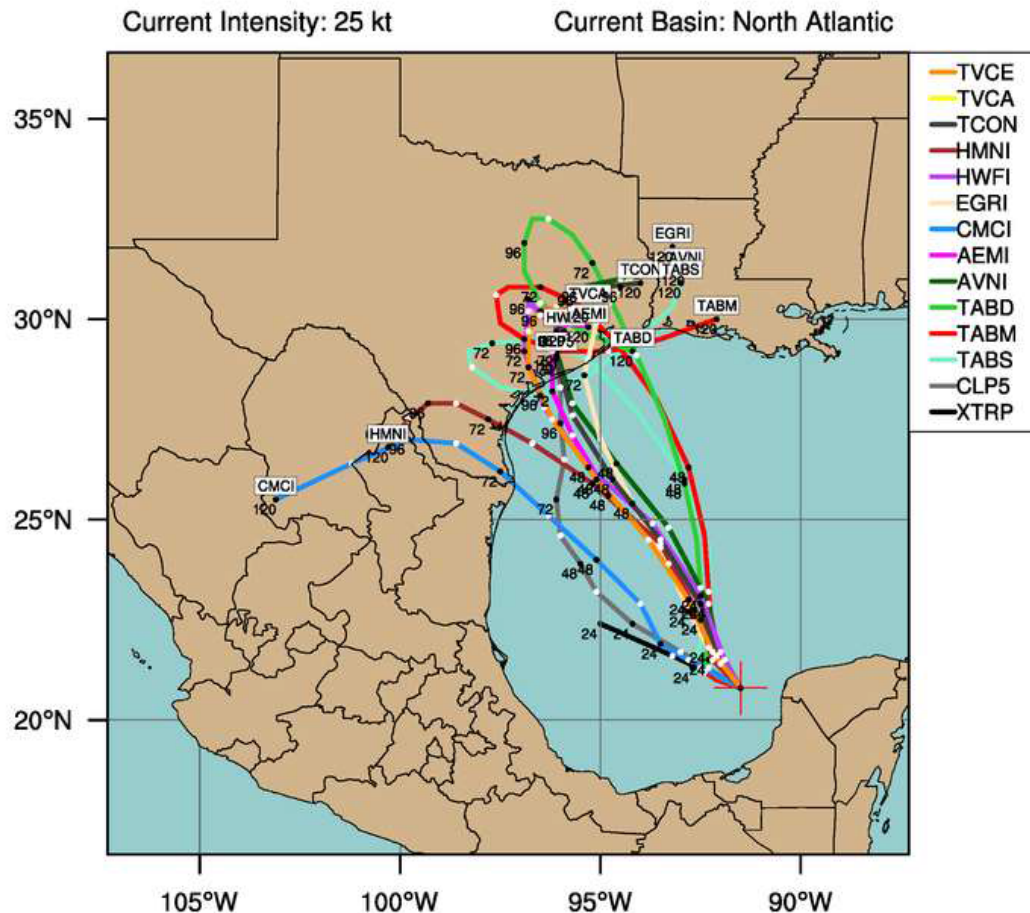
SURF: Swells generated by Harvey are likely to affect the Texas, Louisiana, and northeast Mexico coasts by Friday. These swells are likely to cause life-threatening surf and rip current conditions.

## 2. AREAS AFFECTED BY EVENT:



# LOW HARVEY (AL09)

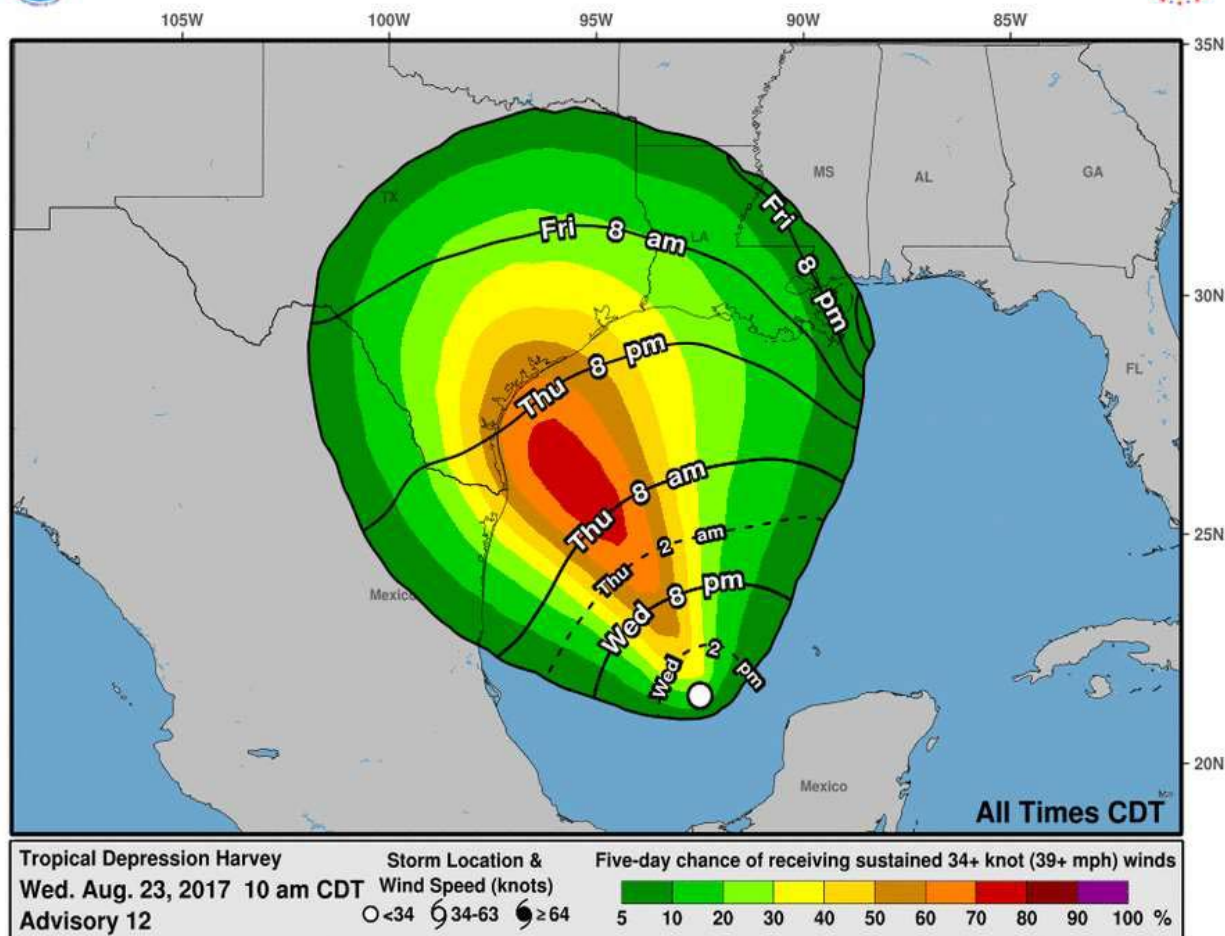
Early-cycle track guidance initialized at 0600 UTC, 23 August 2017



Low confidence forecast at this time! Areas and amounts are likely to change in future forecasts.



## Earliest Reasonable Arrival Time of Tropical-Storm-Force Winds



### 3. LOCAL RESPONDING AGENCIES/ORGANIZATIONS, RESOURCES COMMITTED:

Local Emergency Management Staff is monitoring the situation and will issue additional updates as the situation changes.

### 4. STATE OF TEXAS ACTIONS:

- Texas Department of Public Safety is monitoring the situation.

### 5. Other Information:

Conference Calls are at 10:10 AM (Houston NWS) 1200 (SOC) and (1600 Houston NWS) to monitor the developments of this storm.

**6. COMMENTS:** The Community Emergency Operations Center staff is monitoring the situation and will issue additional reports each day as necessary. **The CEOC is at Level IV (Normal Readiness Conditions).**